



8" Industrial Barcode Printer

# HD820i / HD830i

The best-in-class eight inch wide industrial barcode printer. Perfect for wide format labels.

GoDEX's HD830i is an eight-inch barcode printer designed for applications that require large and durable labels. The HD830i is a rugged printer of exquisite design which includes significant characteristics of high performance electronics, reliable mechanism, user -friendliness and easy maintenance design.



External Label Stand :10" Max.  
(Standard Package included)

- 3.2" color touchscreen facilitates intuitive navigation. Adjustable to 15°.
- Dual-Colored status LEDs and calibration button for simplicity.
- Robust metal casing and solid print mechanism to take on heavy duty jobs
- Outstanding breadth: max label width 10"/ Max print width 8.57".
- Optional wireless connectivity: Bluetooth or Wi-Fi module
- Top cover designed for ease of motion: heightened safety and comfort.
- A sturdy external label stand for up to 10" roll diameters included.
- Adjustable media detectors: including reflective and see-through sensors
- Advanced adaptive dampening technology : to optimize print quality
- Internal Media Pressure plate is designed to stabilize the label printing process



# HD820i / HD830i Specifications

Model Name		HD820i	HD830i
<b>Print Method</b>		Thermal Transfer / Direct Thermal	
<b>Resolution</b>		203 dpi (8 dot/mm)	300 dpi (12 dot/mm)
<b>Print Speed</b>		6 ips (152mm/s)	4 ips (102 mm/s)
<b>Print Width</b>		8.5" (216mm)	8.64" (219.5mm)
<b>Print Length</b>		Min. 1" (25.4 mm)** ; Max . 86.6" ( 2,200 mm)	Min. 1" (25.4 mm)** ; Max . 40" ( 1,016 mm)
<b>Processor</b>		32-bit RISC CPU	
<b>Memory</b>	<b>Flash SDRAM</b>	128 MB Flash (60 MB for user storage) 32 MB	
<b>Sensor Type</b>		Adjustable reflective sensor and transmissive sensor, central aligned	
<b>Media</b>	<b>Type</b>	Continuous form, gap labels, black mark sensing, and punched hole; label length set by auto sensing or programming	
	<b>Width</b>	Tear : Min. 4" (108 mm) – Max. 10" (255 mm) Cutter : Max. 9.05" (230 mm)	
	<b>Thickness</b>	Min. 0.002" (0.05 mm) – Max. 0.01" (0.25 mm)	
	<b>Label roll diameter</b>	External Label stand : 10" Max. (Standard Accessories included)	
	<b>Core diameter</b>	Min. 1.5" (38.1 mm)-Max. 3" (76.2 mm)	
<b>Ribbon</b>	<b>Types</b>	Wax, wax/resin, resin	
	<b>Length</b>	Max.981' (300 m)	
	<b>Width</b>	Min. 4.3" (110 mm) – Max. 8.66" (220 mm)	
	<b>Ribbon roll diameter</b>	2.67" (68 mm) Max.	
	<b>Core diameter</b>	1" (25.4 mm)	
<b>Printer Language</b>		EZPL, GEPL, GZPL, GDPL auto switch	
<b>Software</b>	<b>Label design software</b>	GoLabel (for EZPL only)	
	<b>Driver</b>	Vista, Windows 7, Windows 8 & 8.1, Windows 10, Windows Server 2008 R2, 2012, 2012 R2, 2016, 2019, MAC, Linux	
	<b>SDK</b>	Win CE, .NET, Windows Vista, Windows 7, Windows 8 & 8.1, Windows 10, Android, Mac, iOS	
<b>Resident Fonts</b>	<b>Bitmap Fonts</b>	6, 8, 10, 12, 14, 18, 24, 30, 16X26 and OCR A & B Bitmap fonts 0°, 90°, 180°, 270° rotatable, single characters 0°, 90°, 180°, 270° rotatable	
	<b>TTF Fonts</b>	Bitmap fonts 8 times expandable in horizontal and vertical directions TTF Fonts (Bold / Italic / Underline ). 0°,90°, 180°, 270° rotatable	
	<b>Bitmap Fonts</b>	TTF Fonts (Bold / Italic / Underline ). 0°,90°, 180°, 270° rotatable	
<b>Download Fonts</b>	<b>Asian Fonts</b>	0°, 90°, 180°, 270° rotatable, single characters 0°, 90°, 180°, 270° rotatable 16x16, 24x24. Traditional Chinese (BIG-5), Simplified Chinese(GB2312), Japanese (S-JIS), Korean (KS-X1001)	
	<b>TTF Fonts</b>	0°,90°, 180°, 270° rotatable and 8 times expandable in horizontal and vertical directions TTF Fonts (Bold / Italic / Underline ). 0°,90°, 180°, 270° rotatable	
<b>Barcodes</b>	<b>1-D Bar Codes</b>	China Postal Code, Codabar, Code 11, Code 32, Code 39, Code 93, Code 128 (subset A, B, C), EAN-8/EAN-13 (with 2 & 5 digits extension), EAN 128, FIM, German Post Code, GS1 DataBar, HIBC, Industrial 2 of 5 , Interleaved 2-of-5 (1 of 5), Interleaved 2-of-5 with Shipping Bearer Bars, ISBT-128, ITF 14, Japanese Postnet, Logmars, MSI, Postnet, Plessey, Planet 11 & 13 digit, RPS 128, Standard 2 of 5, Telepen, Matrix 2 of 5, UPC-A/UPC-E (with 2 or 5 digit extension), UCC/EAN-128 K-Mart and Random Weight	
	<b>2-D Bar Codes</b>	Aztec code, Code 49, Codablock F , Datamatrix code, MaxiCode, Micro PDF417, Micro QR code, PDF417, QR code, TLC 39, GS1 Composite	
<b>Code Pages</b>		Codepage 437, 737, 850, 851, 852, 855, 857, 860, 861, 862, 863, 865, 866, 869, Windows 1250, 1251, 1252, 1253, 1254, 1255, 1257 Unicode UTF8 \ UTF16BE \ UTF16LE	
<b>Graphics</b>		Resident graphic file types are BMP and PCX, other graphic formats are downloadable from the software	
<b>Interfaces</b>		<ul style="list-style-type: none"> <li>• USB 2.0 (B-Type)</li> <li>• Serial port: RS-232 (DB-9)</li> <li>• IEEE 802.3 10/100 Base-Tx Ethernet port (RJ-45)</li> <li>• USB Host (A-Type)</li> </ul>	
<b>Control Panel</b>		<ul style="list-style-type: none"> <li>• Backlight 3.2" touch screen LCD</li> <li>• 1 Power on/standby button with dual colour LED backlight</li> <li>• 1 FEED / PAUSE / CANCEL button with dual colour LED : Ready (Green); Error (Red)</li> <li>• 1 Calibration button at rear panel</li> </ul>	
<b>RTC</b>		Standard	
<b>Power</b>		Auto Switching 100-240V AC, 50-60Hz	
<b>Environment</b>	<b>Operation temperature</b>	41°F to 104°F (5°C to 40°C)	
	<b>Storage temperature</b>	-4°F to 140°F (-20°C to 60°C)	
<b>Humidity</b>	<b>Operation</b>	20-85%, non-condensing	
	<b>Storage</b>	10-90%, non-condensing	
<b>Agency Approvals</b>		CE (EMC) \ FCC Class B \ CB \ UL \ cUL \ CCC	
<b>Dimension</b>	<b>Length</b>	221 mm	
	<b>Height</b>	224 mm	
	<b>Width</b>	431 mm	
	<b>Weight</b>	11.7 Kg, excluding consumables	
<b>Options</b>		Cutter (Dealer Install) Parallel port adaptor module (Centronic female 36-pin)(Dealer Install) Bluetooth (Dealer Installer) Wireless LAN (IEEE 802.11 b/g/n) (Dealer Install) Sheet paper module (Factory Install)	

\* Specifications are subject to change without notice. All company and/or product names are trademarks and/or registered trademarks of their respective owners.

\*\* Minimum print height and maximum print speed specification compliance can be dependent on non-standard material variables such as label type, thickness, spacing, liner construction, etc. GoDEX is pleased to test non-standard materials for minimum print height, and maximum print speed capability.

# Applications

## Applications for Labels & Barcodes

**HD820i/HD830i** as versatile as for most applications.



### Logistics

shipping label, package tracing, package label, package receipt etc.

### Warehouse

shelf label, product label, stocking management, exterior/pallet labeling etc.

### Manufacturing

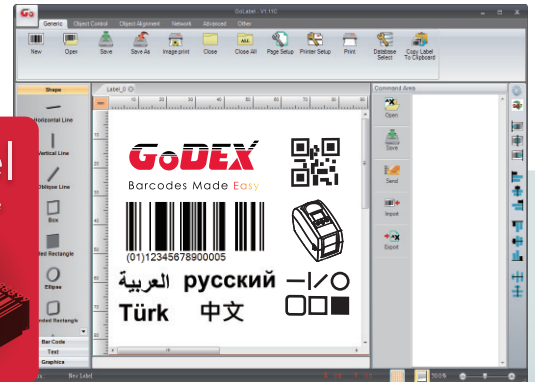
product label, manufacturing label, exterior/pallet label, trade, stocking and document management etc.

## GoDEX LABEL DESIGN SOFTWARE

GoLabel Software / User Friendly

GoLabel is based on a WYSIWYG (what you see is what you get) user interface, makes everything so easy for you to create and print barcode labels. GoLabel is the first-choice label design software that you can't miss it!

Go visit [www.godexintl.com](http://www.godexintl.com) and download GoLabel to experience it!



## GoDEX RIBBONS

High quality GoDEX thermal transfer ribbons.

GoDEX offers premium thermal transfer ribbons that will fit most of your printing applications.

- Wax
- Wax/ Resin
- Resin
- Near Edge

